



# About Us



We would like to introduce ourselves as one of the leading engineering industry having over 35 years experience in the field of steel fabrication.

We have expertise in manufacturing components of Thermal Power Plant Equipment, Wind Mill Towers, Pre Engineered Buildings, and Components for Hydro Power Plants etc.

Since 1973, the year of inception, we are manufacturing thermal power plant components for Bharat Heavy Electricals Limited, one of the worlds largest Power Boiler Manufacturer.

The three and a half decade relationship with BHEL has helped us to develop full-fledged system in our processes which leads to fullest customer satisfaction by ensuring competitive costing, world class quality and shortest possible deliveries.

Apart from BHEL, our list of clients includes reputed names in their respective fields.

We are an ISO 9001 – 2008 Certified Company by TUV, Nord, Germany. In the following pages we have given the list of Facilities available with us, Products manufactured, list of Clients, Quality accreditations and illustrations on some of the products manufactured and facilities available with us.





**M.NAJUMUDEEN**, BE (Mech), ME (Design), CHAIRMAN & MANAGING DIRECTOR

**M.SARFUDEEN**, BE (Mech), M.Tech (Production) - DIRECTOR



## Factory:

SF NO. 99/14, NH-67,  
Devarayaneri,  
Near Trichy – Tanjore Check  
Post, Trichy, Tamilnadu,  
India – 620015.



## Total Extent of Land :

54 Acres

## Total covered Area for manufacturing :

70,000 Sq. Ft.



## Handling Facilities

- 30 MT EOT Cranes – 4 nos.
- 12MT Mobile Cranes –7nos.
- 20 MT A Frames – 2 nos.
- 40 MT Low Bed Jeep Trailers – 2 nos.
- 30 MT Semi Low Bed Jeep Trailer–1 no.
- 20 MT Tractor Trailer – 1 no.



## Production Facilities

### Machineries

- (MESSERS, Germany) CNC Air Plasma and Oxy – Fuel Profile Cutting Machine – 3M Width x 30M Length – 1 no.
- (DAVI, Italy) - CNC Fully Hydraulic Plate Bending Machine – 3 M Width x 40mm Capacity – 1 no.
- (Electro Pneumatics, India) – Tube Bending Machine – 80mm x 2 mm / 65mm x 6 mm capacity – 1 no.
- (HMT, India) – 65 mm capacity Radial Drilling machine – 1 no.
- (BATLIBOI, India) – 65 mm capacity Radial Drilling machine – 1 no.

## Production Facilities

(GEEKA, Spain) - Multi functional –  
Shearing, Punching and Pressing machine – 1 no.

SAW machine (1000 A) – 4 nos.

MIG Welding machine (600 A) – 31 nos.

SMAW Welding Rectifier (400 A)– 45 nos.

Welding Invertors (400 A)– 60 nos.

TIG Welding Sets – 3 nos.

Single Phase SMAW Welding machine – 10 nos.

Power press – 2 nos.

Hydro testing equipment – 6 nos.

Pipe beveling machine – 8 nos.

Pipe cutting machine – 10 nos.

Bandsaw machine – 1 no.

Bench grinding machine – 3 nos.

Grinding machine – 60 nos.

Blasting Compressors, hoppers and  
Air Less Painting Pumps.

NDT Facilities – LPI, MPI, RT and UT

Mechanical, Chemical Testing Facilities,  
Calibration Facility, Heat Treatment facility, and all  
other Heavy Fabrication and Machining related  
facilities are available at associated concerns in and  
around Trichy.





CNC Fully Hydraulic Plate Bending Machine – 3 M  
Width x 40mm Capacity



(Electro Pneumatics, India) – Tube Bending Machine  
80mm x 2 mm / 65mm x 6 mm capacity.



Blasting & Painting facility

## Quality Testing Facilities

Radiography Testing to measure welding soundness.

Ultrasonic Testing to test the welding soundness.

Easy Laser Testing to measure the Flange Tilt & Flatness.

D meter testing to measure the thickness of Flat Materials.

Distance Meter to measure the distance in the Job.

Coat meter to measure the Paint coat thickness.

Profile Gauge to measure the Microns after the Blasting process.



## Quality Policy

We at Barakath Engineering Industries (P) Ltd., are committed to manufacture and supply Structural Fabricated Product and achieve business excellence through effective management of resources, with continual improvement, aimed at total Customers and Stakeholder's satisfaction.

- INDIAN BOILER REGULATIONS (IBR)
- BHARAT HEAVY ELECTRICALS LIMITED (BHEL)
- NATIONAL THERMAL POWER CORPORATION (NTPC)
- LLOYD'S REGISTER OF SHIPPING (LRS)
- INDIAN REGISTER OF SHIPPING (IRS)
- TATA PROJECTS LIMITED (TPL)
- TATA CONSULTING ENGINEERS (TCE)
- M.N DASTUR AND COMPANY
- INDIAN INSTITUTE OF QUALITY ASSURANCE (IIQA)
- QUALITY EVALUATION AND SYSTEM TEAM P LTD., (QUEST)
- TECHNISCHER ÜBERWACHUNGS-VEREIN (TUV)



Circular Damper for BHEL.

Damper for BHEL.

Ceiling Girder for BHEL.

Wind Box for BHEL.

Duct (500 MW) for BHEL.

Isolator for Fouress Engineering.

Air Heater Block for BHEL.

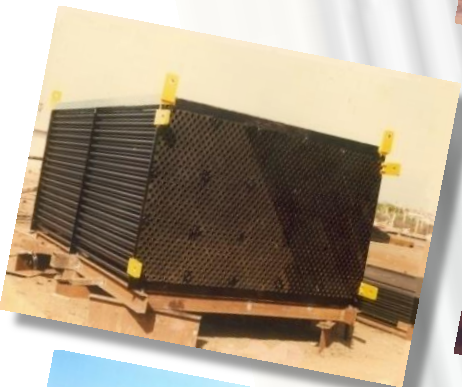
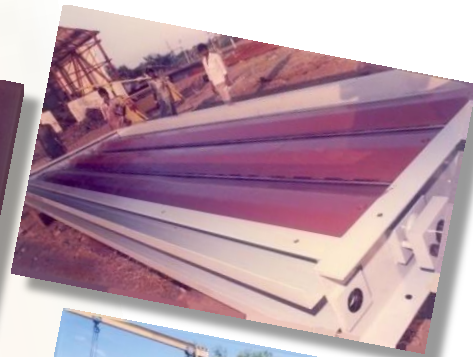
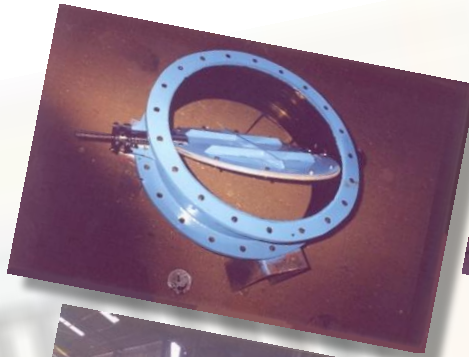
Isolator for Nalco.

Pre Engineering buildings for Zamil steel.

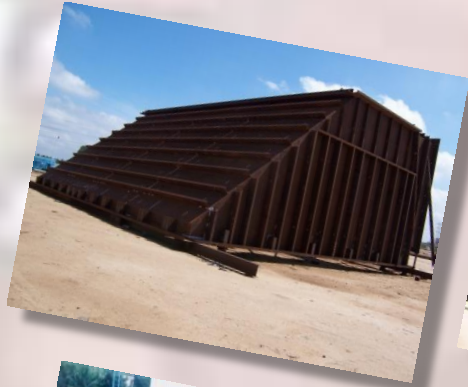
Temple Car Wheel BHEL.

Duct Assembly for Fouress.

Cyclone Duct for Dalmia Cement.



Hoppers for BHEL in 1976.



Elbow Duct for BHEL in 1975.



Ducting for hydro Power Project to Gammon India Ltd.,



Column assembly For BHEL.



Lattice Windmill Tower for DAS Lagerwey Ltd.,

Windmill Tower (78.3mts, 1.5 MW) for Suzlon Energy Ltd.,

Windmill Tower for Windia Power Ltd.,

Ceiling Girder for BHEL (41 tons)



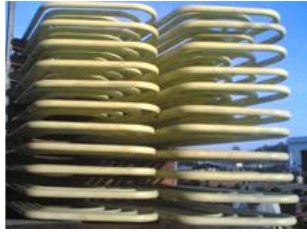
## Water wall panels (500 MW) Under IBR.



## Headers (250 and 500 MW) boilers under IBR.



## Boiler Pressure part components.





## BARAKATH ENGINEERING INDUSTRIES (P) LTD.



SF-99/14, NH-67, NEAR TRICHY-TANJORE CKECK POST,  
DEVARAYANERI, TRICHY, TAMILNADU, INDIA - 620 015.

PHONE : +91 9003966060, 61

Email : [mail@barakath.com](mailto:mail@barakath.com), Website : [www.barakath.com](http://www.barakath.com)

